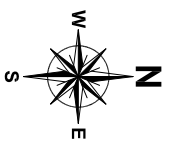
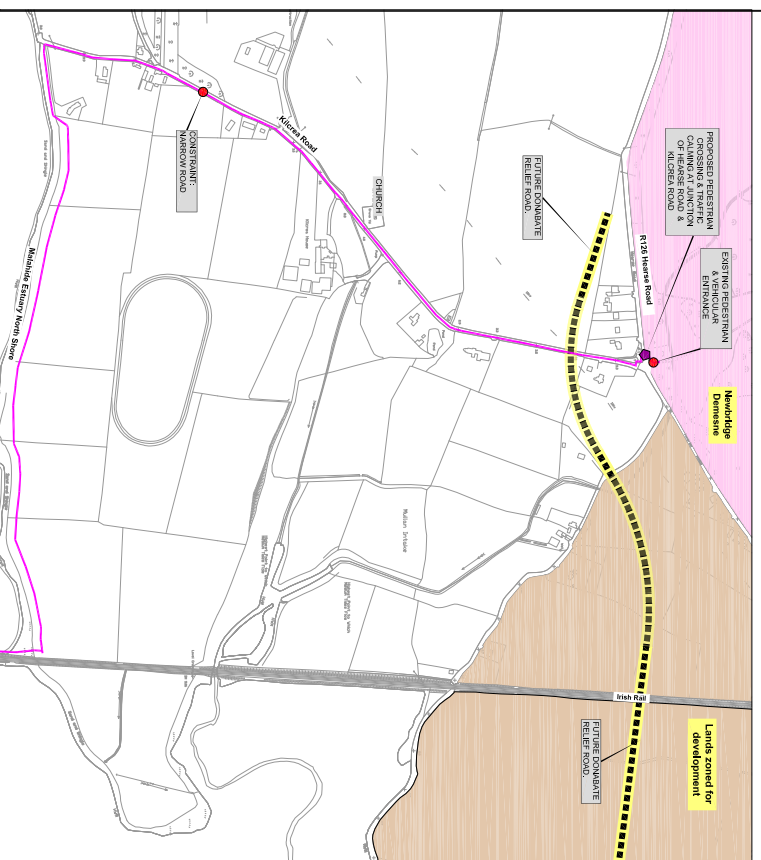
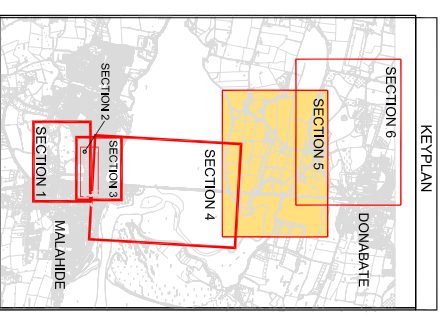


Broadmeadow Way - Section 5

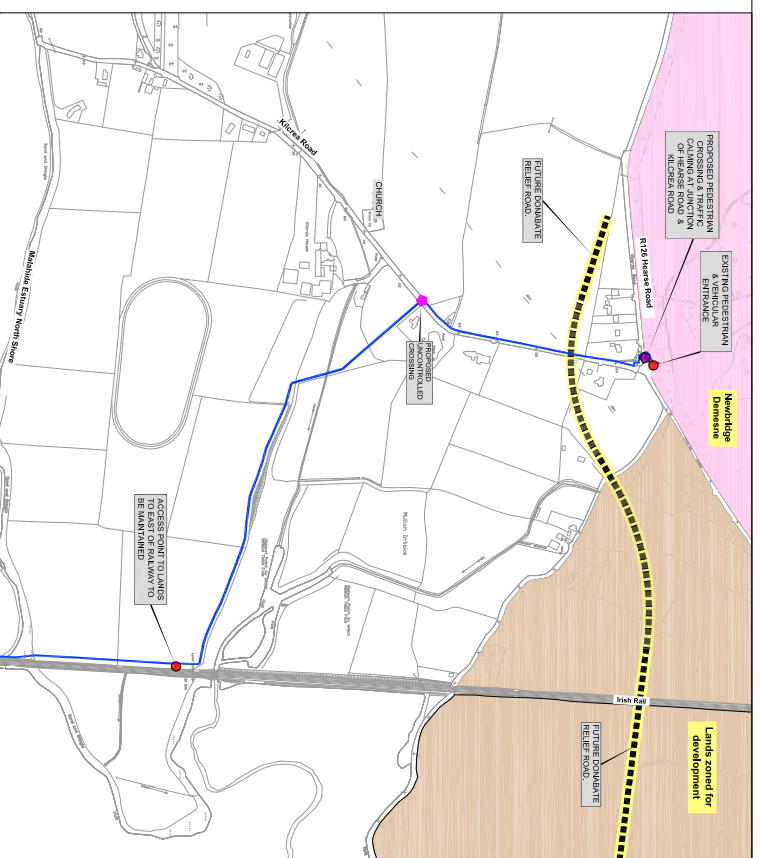
North Shore Of Malahide Estuary To R126 Hearse Road



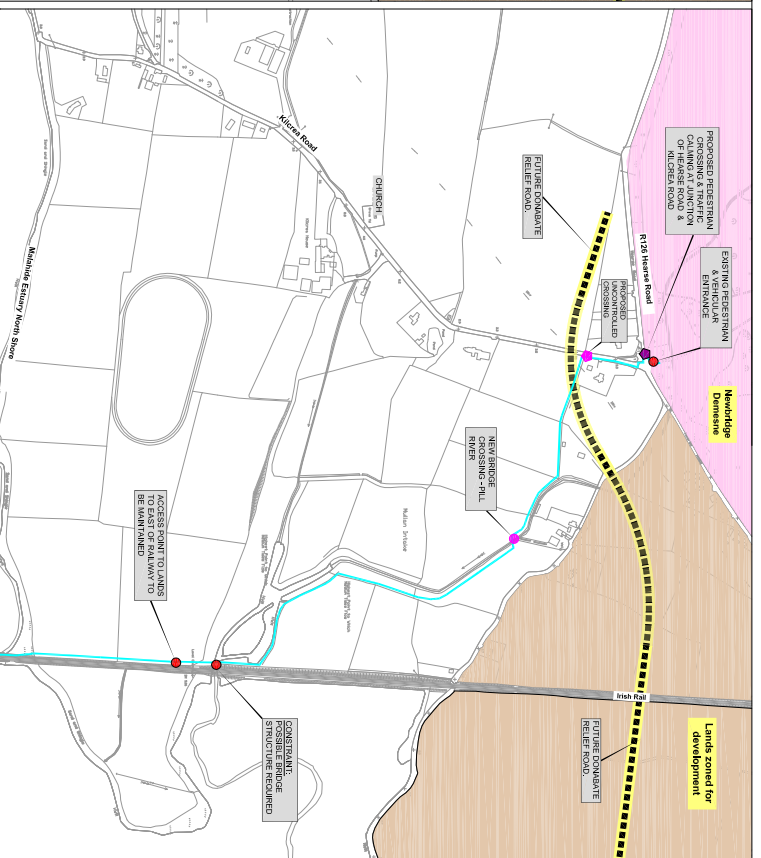
- Legend:**
- Section 5 Option 1
 - Section 5 Option 2
 - Section 5 Option 3
 - Section 5 Option 4
 - Section 5 Option 5
 - Section 5 Option 6
 - Future Road Network
 - Local Constraints
 - Proposed Crossings
 - Lands Zoned (For Development)
 - Local Amenities (Newbridge Demense)



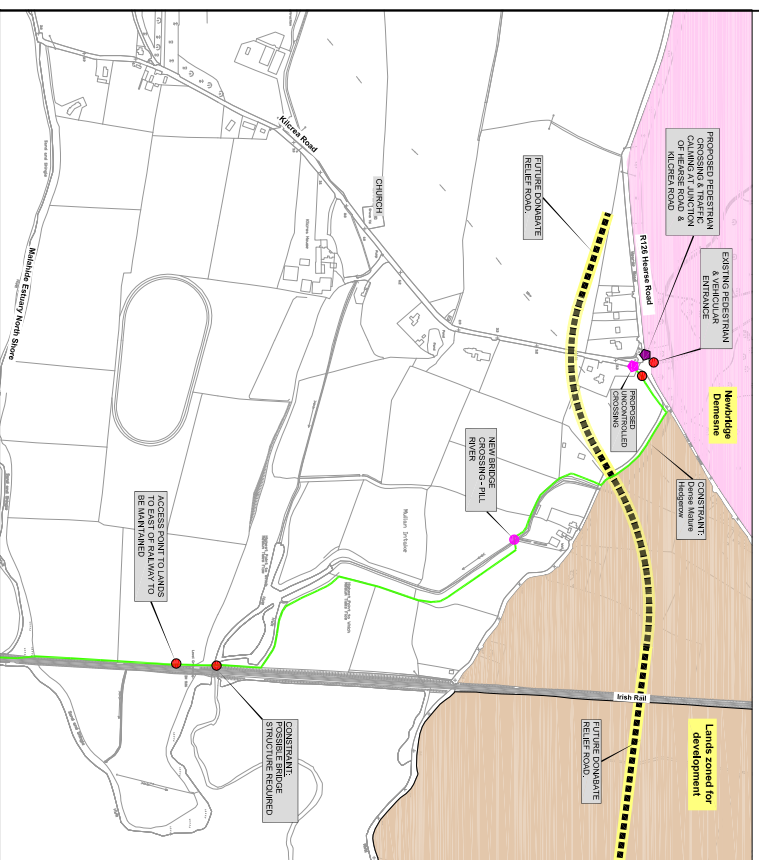
OPTION 1



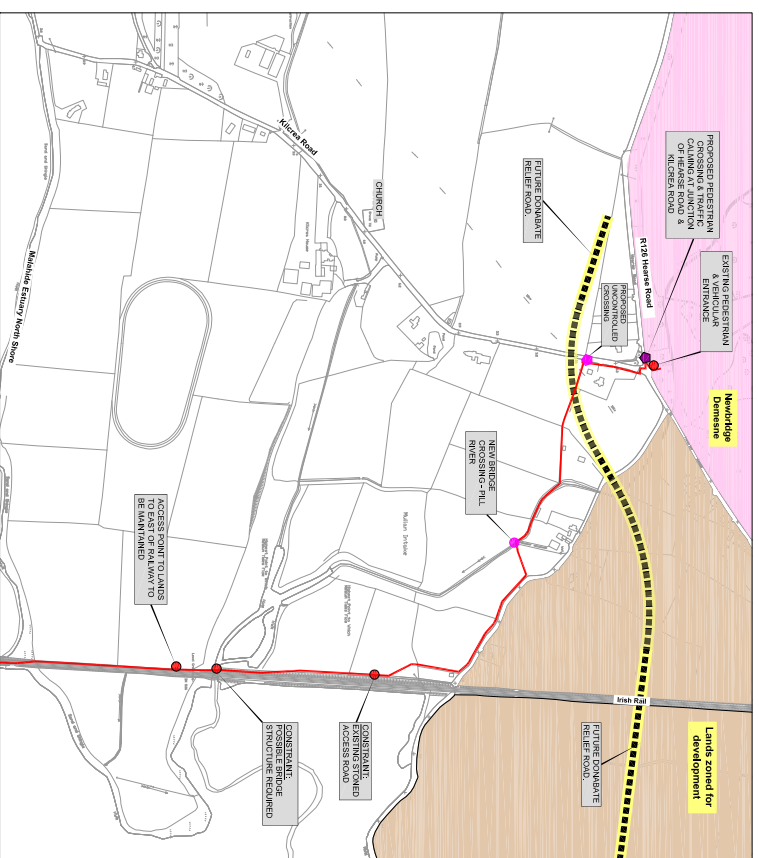
OPTION 2



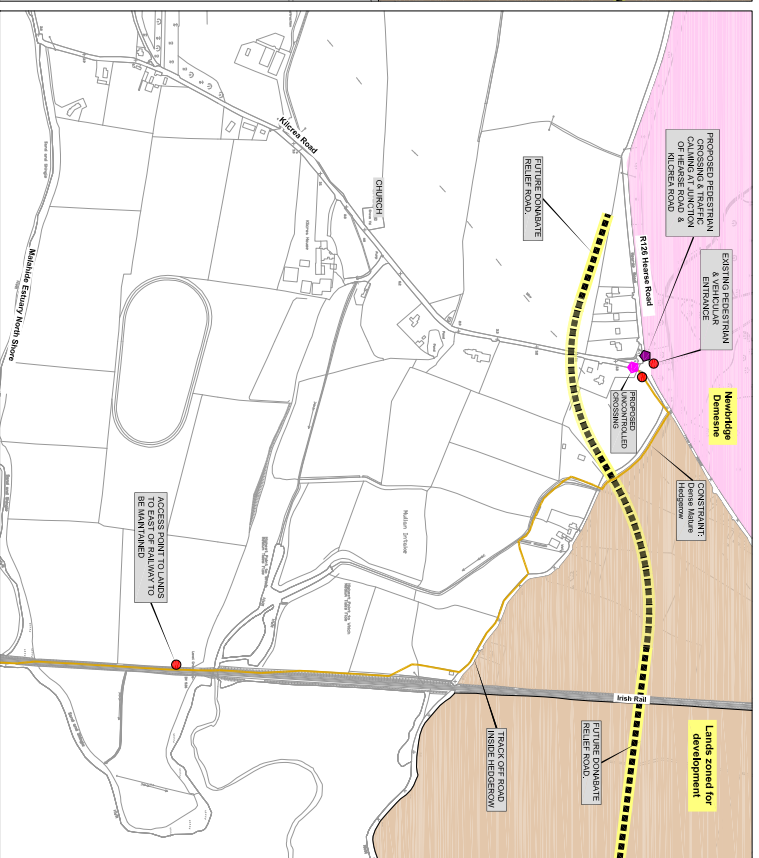
OPTION 3



OPTION 4

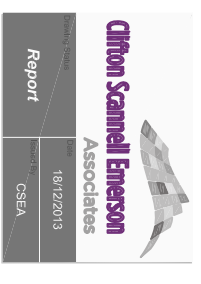


OPTION 5



OPTION 6

Revision	Description	Initials	Date



Clifton Scannell Emerson Associates
Clifton Scannell Emerson Associates Limited
Consulting Engineers
Sailort Lodge
Chadwellstown Avenue,
Blackrock, Co. Dublin,
Ireland.
T. +353 1 298 8008
F. +353 1 293 3465
E. info@cseala.ie
W. www.cseala.ie

FINGAL COUNTY COUNCIL

BROADMEADOW WAY

INDIVIDUAL ROUTE OPTIONS

SECTION 5

Drawn By: NH Date: DECEMBER 2013

Checked by: PM Scale: 1:500 @ A1

Doc. No.: 12_160_148